

GREAT NORTHERN RAILWAY LINE

Table 1—MAIN LINE, VIA ST. CLOUD, FARGO AND GRAND FORKS.

Ms	October 31, 1909.	No. 2	No. 6	No. 8	No. 12	No. 10	4	14
13	9	No. 11	No. 7	No. 5	No. 1	Ms	10	14
19 20	7 30	9 35 A M	7 15 P M	10 40 P M	11 15 A M	0	10 10 A M	10 40 A M
9 55	8 05	9 05 A M	6 50 P M	11 10 P M	11 45 A M	10	10 10 A M	10 40 A M
		9 33 "		11 34 P M		17	10 10 A M	10 40 A M
		9 42 "				24	10 10 A M	10 40 A M
		9 51 "				28	10 10 A M	10 40 A M
		10 06 "				33	10 10 A M	10 40 A M
		10 27 "	6 52 "			39	10 10 A M	10 40 A M
		10 43 "				48	10 10 A M	10 40 A M
		10 48 "				55	10 10 A M	10 40 A M
		11 01 "	7 18 "			57	10 10 A M	10 40 A M
		11 15 "				62	10 10 A M	10 40 A M
		11 25 A M	7 43 P M	1 00 A M		70	10 10 A M	10 40 A M
						75	10 10 A M	10 40 A M
						81	10 10 A M	10 40 A M
						82	10 10 A M	10 40 A M
						85	10 10 A M	10 40 A M
						90	10 10 A M	10 40 A M
						96	10 10 A M	10 40 A M
						102	10 10 A M	10 40 A M
						108	10 10 A M	10 40 A M
						117	10 10 A M	10 40 A M
						124	10 10 A M	10 40 A M
						130	10 10 A M	10 40 A M
						141	10 10 A M	10 40 A M
						148	10 10 A M	10 40 A M
						154	10 10 A M	10 40 A M
						159	10 10 A M	10 40 A M
						163	10 10 A M	10 40 A M
						168	10 10 A M	10 40 A M
						176	10 10 A M	10 40 A M
						182	10 10 A M	10 40 A M
						187	10 10 A M	10 40 A M
						195	10 10 A M	10 40 A M
						204	10 10 A M	10 40 A M
						210	10 10 A M	10 40 A M
						217	10 10 A M	10 40 A M
						225	10 10 A M	10 40 A M
						235	10 10 A M	10 40 A M
						242	10 10 A M	10 40 A M
						250	10 10 A M	10 40 A M
						257	10 10 A M	10 40 A M
						260	10 10 A M	10 40 A M
						265	10 10 A M	10 40 A M
						270	10 10 A M	10 40 A M
						275	10 10 A M	10 40 A M
						282	10 10 A M	10 40 A M
						288	10 10 A M	10 40 A M
						292	10 10 A M	10 40 A M
						297	10 10 A M	10 40 A M
						299	10 10 A M	10 40 A M
						299	10 10 A M	10 40 A M
						304	10 10 A M	10 40 A M
						310	10 10 A M	10 40 A M
						317	10 10 A M	10 40 A M
						323	10 10 A M	10 40 A M
						324	10 10 A M	10 40 A M
						217	10 10 A M	10 40 A M
						226	10 10 A M	10 40 A M
						232	10 10 A M	10 40 A M
						241	10 10 A M	10 40 A M
						242	10 10 A M	10 40 A M
						250	10 10 A M	10 40 A M
						263	10 10 A M	10 40 A M
						269	10 10 A M	10 40 A M
						275	10 10 A M	10 40 A M
						278	10 10 A M	10 40 A M
						281	10 10 A M	10 40 A M
						285	10 10 A M	10 40 A M
						289	10 10 A M	10 40 A M
						295	10 10 A M	10 40 A M
						300	10 10 A M	10 40 A M
						307	10 10 A M	10 40 A M
						312	10 10 A M	10 40 A M
						318	10 10 A M	10 40 A M
						320	10 10 A M	10 40 A M
						320	10 10 A M	10 40 A M
						322	10 10 A M	10 40 A M
						327	10 10 A M	10 40 A M
						331	10 10 A M	10 40 A M
						336	10 10 A M	10 40 A M
						342	10 10 A M	10 40 A M
						348	10 10 A M	10 40 A M

NOTE.—Trains Nos. 1 and 2, The Oriental Limited, carry but a limited amount of baggage. Baggage of passengers on these trains will be forwarded by another train when necessary.
 *Daily, except Sunday; †Stops to take passengers from west of Cut Bank; ‡Stops to take passengers for points beyond St. Paul and Minneapolis; §Stops to take passengers for Twin Falls.
 † Coupon stations; ‡ Telegraph stations.
 For Index of Stations, see pages 636 and 637.
 STANDARD—Central time.
 † Coupon stations; ‡ Telegraph stations.

GREAT NORTHERN RAILWAY LINE

Table 2—MAIN LINE, VIA WILLMAR, CASSELTON AND DEVILS LAKE.

Ms	November 28, 1909.	No. 4	2	No. 10	No. 6	No. 14	No. 22	816
183	815	21	No. 13	5	No. 9	No. 3	No. 1	Ms
14 35	6 00	7 20 A M	10 40 A M	11 10	8 05	10 45 P M	11 15 A M	0
6 07	6 30	9 55	11 10	8 05	11 20 P M	11 45 A M	10	10 10 A M
6 28	6 52	10 20		8 30			17	10 10 A M
6 38	6 56	10 23		8 41			24	10 10 A M
6 48	6 28	10 30					27	10 10 A M
6 58	6 15	10 41					32	10 10 A M
7 08	6 28	10 55					38	10 10 A M
7 18	6 42	11 10					45	10 10 A M
7 28	6 52	11 18					48	10 10 A M
7 38	7 08	11 32					53	10 10 A M
7 48	7 10	11 40					56	10 10 A M
7 58	7 20	11 50 A M					59	10 10 A M
8 08	7 36	12 03 Noon					65	10 10 A M
8 18	7 46	12 16					70	10 10 A M
8 28	8 00	12 34					76	10 10 A M
8 38	8 15	12 49 Noon					84	10 10 A M
8 48	8 30	1 02 P M					89	10 10 A M
8 58	8 47	1 16					96	10 10 A M
9 08	8 58	1 30					102	10 10 A M
9 18	9 08	1 45					109	10 10 A M
9 28	9 18	2 00					116	10 10 A M
9 38	9 28	2 15					120	10 10 A M
9 48	9 38	2 30					125	10 10 A M
9 58	9 48	2 45					132	10 10 A M
10 08	9 58	3 00					138	10 10 A M
10 18	10 08	3 15					148	10 10 A M
10 28	10 18	3 30					158	10 10 A M
10 38	10 28	3 45					165	10 10 A M
10 48	10 38	4 00					171	10 10 A M
10 58	10 48	4 15					176	10 10 A M
11 08	10 58	4 30					181	10 10 A M
11 18	11 08	4 45					187	10 10 A M
11 28	11 18	5 00					192	10 10 A M
11 38	11 28	5 15					196	10 10 A M
11 48	11 38	5 30					199	10 10 A M
11 58	11 48	5 45					207	10 10 A M
12 08	11 58	6 00					214	10 10 A M
12 18	12 08	6 15					215	10 10 A M
12 28	12 18	6 30					218	10 10 A M
12 38	12 28	6 45					222	10 10 A M
12 48	12 38	7 00					229	10 10 A M
12 58	12 48	7 15					232	10 10 A M
1 08	12 58	7 30					235	10 10 A M
1 18	1 08	7 45					241	10 10 A M
1 28	1 18	8 00					240	10 10 A M
1 38	1 28	8 15					254	10 10 A M
1 48	1 38	8 30					258	10 10 A M
1 58	1 48	8 45					262	10 10 A M
2 08	1 58	9 00					267	10 10 A M
2 18	2 08	9 15					270	10 10 A M
2 28	2 18	9 30					273	10 10 A M
2 38	2 28	9 45					277	10 10 A M
2 48	2 38	10 00					284	10 10 A M
2 58	2 48	10 15					290	10 10 A M
3 08	2 58	10 30					295	10 10 A M
3 18	3 08	10 45					298	10 10 A M
3 28	3 18	11 00					300	10 10 A M
3 38	3 28	11 15					304	10 10 A M
3 48	3 38	11 30					307	10 10 A M
3 58	3 48	11 45					312	10 10 A M
4 08	3 58	12 00					316	10 10 A M
4 18	4 08	12 15					317	10 10 A M
4 28	4 18	12 30					324	10 10 A M
4 38	4 28	12 45					332	10 10 A M
4 48	4 38	1 00					338	10 10 A M
4 58	4 48	1 15					345	10 10 A M
5 08	4 58	1 30					345	10 10 A M
5 18	5							



GREAT NORTHERN RAILWAY LINE



Table 3. MAIN LINE—Continued.

219 5 3 1 Mls				4 2 6 220				43 3 1 263 Mls				October 31, 1909.				264 4 2 44			
A M P M P M A M				P M P M A M P M				A M P M				P M A M				P M A M			
10:35				5:03				3:11				7:52				7:10			
6:40				11:35				3:22				7:42				7:20			
6:55				11:50				3:31				7:30				7:30			
8:20				12:20				3:38				7:22				7:22			
8:40				12:45				3:46				7:13				7:13			
8:51				1:00				3:56				7:02				7:02			
9:28				1:15				4:07				6:49				6:49			
9:45				1:30				4:27				6:38				6:38			
10:00				1:45				4:49				6:26				6:26			
10:15				2:00				4:39				6:17				6:17			
10:30				2:15				4:49				6:09				6:09			
10:45				2:30				4:54				6:02				6:02			
11:00				2:45				5:03				5:52				5:52			
11:15				3:00				5:13				5:42				5:42			
11:30				3:15				5:23				5:32				5:32			
11:45				3:30				5:35				5:22				5:22			
12:00				3:45				5:45				5:14				5:14			
12:15				4:00				5:55				5:06				5:06			
12:30				4:15				6:05				4:57				4:57			
12:45				4:30				6:15				4:48				4:48			
1:00				4:45				6:25				4:40				4:40			
1:15				5:00				6:35				4:32				4:32			
1:30				5:15				6:45				4:24				4:24			
1:45				5:30				6:55				4:16				4:16			
2:00				5:45				7:05				4:08				4:08			
2:15				6:00				7:15				4:00				4:00			
2:30				6:15				7:25				3:52				3:52			
2:45				6:30				7:35				3:44				3:44			
3:00				6:45				7:45				3:36				3:36			
3:15				7:00				7:55				3:28				3:28			
3:30				7:15				8:05				3:20				3:20			
3:45				7:30				8:15				3:12				3:12			
4:00				7:45				8:25				3:04				3:04			
4:15				8:00				8:35				2:56				2:56			
4:30				8:15				8:45				2:48				2:48			
4:45				8:30				8:55				2:40				2:40			
5:00				8:45				9:05				2:32				2:32			
5:15				9:00				9:15				2:24				2:24			
5:30				9:15				9:25				2:16				2:16			
5:45				9:30				9:35				2:08				2:08			
6:00				9:45				9:45				2:00				2:00			
6:15				10:00				9:55				1:52				1:52			
6:30				10:15				10:05				1:44				1:44			
6:45				10:30				10:15				1:36				1:36			
7:00				10:45				10:25				1:28				1:28			
7:15				11:00				10:35				1:20				1:20			
7:30				11:15				10:45				1:12				1:12			
7:45				11:30				10:55				1:04				1:04			
8:00				11:45				11:05				0:56				0:56			
8:15				12:00				11:15				0:48				0:48			
8:30				12:15				11:25				0:40				0:40			
8:45				12:30				11:35				0:32				0:32			
9:00				12:45				11:45				0:24				0:24			
9:15				1:00				11:55				0:16				0:16			
9:30				1:15				12:05				0:08				0:08			
9:45				1:30				12:15				0:00				0:00			
10:00				1:45				12:25				0:00				0:00			
10:15				2:00				12:35				0:00				0:00			
10:30				2:15				12:45				0:00				0:00			
10:45				2:30				12:55				0:00				0:00			
11:00				2:45				1:05				0:00				0:00			
11:15				3:00				1:15				0:00				0:00			
11:30				3:15				1:25				0:00				0:00			
11:45				3:30				1:35				0:00				0:00			
12:00				3:45				1:45				0:00				0:00			
12:15				4:00				1:55				0:00				0:00			
12:30				4:15				2:05				0:00				0:00			
12:45				4:30				2:15				0:00				0:00			
1:00				4:45				2:25				0:00				0:00			
1:15				5:00				2:35				0:00				0:00			
1:30				5:15				2:45				0:00				0:00			
1:45				5:30				2:55				0:00				0:00			
2:00				5:45				3:05				0:00				0:00			
2:15				6:00				3:15				0:00				0:00			
2:30				6:15				3:25				0:00				0:00			
2:45				6:30				3:35				0:00				0:00			
3:00				6:45				3:45				0:00				0:00			
3:15				7:00				3:55				0:00				0:00			
3:30				7:15				4:05				0:00				0:00			
3:45				7:30				4:15				0:00				0:00			
4:00				7:45				4:25				0:00				0:00			
4:15				8:00				4:35				0:00				0:00			
4:30				8:15				4:45				0:00				0:00			
4:45				8:30				4:55				0:00				0:00			
5:00				8:45				5:05				0:00				0:00			
5:15				9:00				5:15				0:00				0:00			
5:30				9:15				5:25				0:00				0:00			
5:45				9:30				5:35				0:00				0:00			
6:00				9:45				5:45				0:00				0:00			
6:15				10:00				5:55				0:00				0:00			
6:30				10:15				6:05				0:00				0:00			
6:45				10:30				6:15				0:00				0:00			
7:00				10:45				6:25				0:00				0:00			
7:15				11:00				6:35				0:00				0:00			
7:30				11:15				6:45				0:00				0:00			
7:45				11:30				6:55				0:00				0:00			
8:00				11:45				7:05				0:00				0:00			
8:15				12:00				7:15				0:00				0:00			
8:30				12:15				7:25				0:00				0:00			
8:45				12:30				7:35				0:00				0:00			
9:00				12:45				7:45				0:00				0:00			
9:15				1:00				7:55				0:00				0:00			
9:30				1:15				8:05				0:00				0:00			
9:45				1:30				8:15				0:00				0:00			
10:00				1:45				8:25				0:00				0:00			
10:15				2:00				8:35				0:00				0:00			
10:30				2:15				8:45				0:00				0:00			
10:45				2:30				8:55				0:00				0:00			
11:00				2:45				9:05				0:00				0:00			
11:15				3:00				9:15				0:00				0:00			
11:30				3:15				9:25				0:00				0:00			
11:45				3:30				9:35				0:00				0:00			
12:00				3:45				9:45				0:00				0:00			
12:15				4:00				9:55				0:00				0:00			
12:30				4:15				10:05				0:00				0:00			
12:45				4:30				10:15				0:00				0:00			
1:00				4:45				10:25				0:00				0:00			
1:15				5:00				10:35				0:00				0:00			
1:30				5:15				10:45				0:00				0:00			
1:45				5:30				10:55				0:00				0:00			
2:00				5:45				11:05				0:00				0:00			
2:15				6:00				11:15				0:00				0:00			
2:30				6:15				11:25				0:00				0:00			
2:45				6:30				11:35				0:00				0:00			
3:00				6:45				11:45				0:00				0:00			
3:15				7:00				11:55				0:00				0:00			
3:30				7:15				12:05				0:00				0:00			
3:45				7:30				12:15				0:00				0:00			
4:00				7:45				12:25				0:00				0:00			
4:15				8:00				12:35				0:00				0:00			
4:30				8:15				12:45				0:00				0:00			
4:45				8:30				12:55				0:00				0:00			
5:00				8:45				1:05				0:00				0:00			
5:15				9:00				1:15				0:00				0:00			
5:30				9:15				1:25				0:00				0:00			
5:45				9:30				1:35				0:00				0:00			
6:00				9:45				1:45				0:00				0:00			
6:15				10:00				1:55				0:00				0:00			
6:30				10:15				2:05				0:00				0:00			
6:45				10:30				2:15				0:00				0:00			
7:00				10:45				2:25				0:00				0:00			
7:15				11:00				2:35				0:00				0:00			
7:30				11:15				2:45				0:00				0:00			
7:45				11:30				2:55				0:00				0:00			
8:00				11:45				3:05				0:00				0:00			
8:15				12:00				3:15				0:00				0:00			
8:30				12:15				3:25				0:00				0:00			
8:45				12:30				3:35				0:00				0:00			
9:00				12:45				3:45				0:00				0:00			
9:15				1:00				3:55				0:00				0:00			
9:30				1:15				4:05				0:00				0:00			
9:45				1:30				4:15				0:00				0:00			
10:00				1:45				4:25				0:00				0:00			
10:15				2:00				4:35				0:00				0:00			
10:30				2:15				4:45				0:00				0:00			
10:45				2:30				4:55				0:00				0:00			
11:00				2:45				5:05				0:00				0:00			
11:15				3:00				5:15				0:00				0:00			
11:30				3:15				5:25				0:00				0:00			
11:45				3:30				5:35				0:00				0:00			
12:00				3:45				5:45				0:00				0:00			
12:15				4:00				5:55				0:00				0:00			
12:30				4:15				6:05				0:00				0:00			
12:45				4:30				6:15				0:00				0:00			
1:00				4:45															

GREAT NORTHERN RAILWAY LINE

Table 48—SEATTLE AND VANCOUVER.

280	276	278	272	270	274	Ms	October 31, 1909.	273	269	271	275	277	279
P M	P M	P M	Noon	A M	A M		(Pacific time.)	P M	P M	P M	A M	A M	A M
11:45	6:45	4:35	12:25	8:05	0		live. + Seattle	3:35	3:55	9:40	7:45	11:50	
12:01	6:00			8:20	4		G. N. Dock				7:35		
12:05	6:05			8:25	5		Interbay	3:20			7:30	11:35	
12:13				8:25	5		Ballard	3:15			7:25	11:30	
12:27	6:27			8:49	14		Metum				7:18		
12:35	6:32			8:58	17		Richmond Beach	2:52			7:02	11:06	
12:45	6:40			9:07	22		Edmonds	2:42			6:52	10:56	
12:53	6:47			9:14	24		Meadowdale	2:29			6:40	10:43	
1:03	7:00			9:26	29		Mosher	2:21			6:32	10:34	
1:20	7:20	5:52		9:44	33		Mukilteo	2:10			6:21	10:22	
				9:44	33		Everett	1:52	2:35	8:15	6:07	10:07	
				9:44	33		Delta				6:01	9:54	
				9:44	33		Marysville	1:35			5:45	9:44	
				9:44	33		English	1:15			5:25	9:26	
				9:44	33		Silvana	1:00			5:13	9:16	
				9:44	33		Stanwood	12:47		7:23	4:58	8:58	
				9:44	33		Fir	12:30			4:41	8:42	
				9:44	33		Mt. Vernon	12:15	1:28	7:00	4:28	8:20	P M
				9:44	33		Burlington	12:01	1:20	6:51	4:15	8:16	6:35
				9:44	33		Belleville	11:48			4:01	8:04	6:25
				9:44	33		Bow	11:36			3:50	7:50	6:15
				9:44	33		Blanchard				3:38	7:46	6:03
				9:44	33		Samish	11:16			3:23	7:34	5:48
				9:44	33		Chuckanut	11:11			3:08	7:25	5:35
				9:44	33		South Bellingham	11:05	12:38	6:08	3:03	7:15	5:25
				9:44	33		Bellingham	10:55	12:30	6:00	3:00	7:15	5:25
				9:44	33		Brennan	10:38			2:37	A M	P M
				9:44	33		Ferndale	10:28			2:30		
				9:44	33		Enterprise	10:20			2:20		
				9:44	33		Custer	10:13			2:12		
				9:44	33		Blaine	9:55	11:45	5:20	1:50		
				9:44	33		White Rock	9:39	11:35	5:10	1:50		
				9:44	33		Crescent	9:27			1:16		
				9:44	33		Colebrook	9:17	11:20	4:54	1:05	3:97	
				9:44	33		Townsend	9:05			12:45	P M	
				9:44	33		New Westminster	8:50	11:00	4:30	12:27	3:30	
				9:44	33		Sapperton	8:45			12:15	3:25	
				9:44	33		Burnaby	8:34			12:07	3:10	
				9:44	33		Ardley	8:24			12:02	3:00	
				9:44	33		Still Creek	8:25			11:57	2:50	
				9:44	33		Vancouver	8:15	10:30	4:00	11:45	2:30	

Table 49—SUMAS, NEW WESTMINSTER AND GUICHON.

387	397	Mls.	October 31, 1909.	398	388
P M			(Pacific time.)		A M
3:10		0	live. Sumas		11:59
3:05		0.1	Huntingdon		11:55
3:15		0.1	Abbotsford		11:45
3:40		3.6	Pinegrove		11:45
4:00		7.2	Aldergrove		11:45
4:20		16.9	Otter		10:50
4:45		21.6	Lincoln		10:50
			live. + New Westminster		9:20
			Port Kells		8:30
			Cloverdale		8:10
			Southport		7:50
			Colebrook		7:40
			Inverholm		7:15
			Challuchan		7:05
			Guichon		7:00

Table 50—ROCKPORT AND ANACORTES.

290	290	280	M	October 31, 1909.	399	289	278
P M	A M			(Pacific time.)	P M	P M	P M
4:25	6:10			live. Rockport		2:20	9:15
4:45	6:27	6		Faber		2:03	8:58
5:02	6:36	9		Concrete		1:50	8:43
5:08	6:42	10		Grassmere		1:38	8:28
5:23	6:57	16		Birdsview		1:20	8:25
5:38	7:12	20		Hamilton		1:05	8:12
5:50	7:23	25		Lyman		12:50	8:00
6:08	7:37	29		Cokedale Junction		12:35	7:45
6:23	7:52	35		Sedro-Woolley		12:23	7:35
6:29	7:58	35		Sterling		12:12	7:24
6:40	8:10	37		live. Burlington		12:05	7:15
6:55	8:25	43		live. Burlington		11:35	6:35
7:15	8:45	48		Avon		7:49	11:27
7:35	9:05	53		Fredonia		7:39	11:10
7:48	9:17	54		Whitney		7:31	11:13
8:02	9:30	58		Fidalgo		7:15	10:57
8:15	9:40	54		Anacortes		7:00	10:45

Trains marked * run daily; † daily, except Sunday; § Sunday only.
+ Coupon stations; † telegraph stations.

For index of Stations. see pages 636-637.
For Map, see page 634.

GREAT NORTHERN STEAMSHIP CO.

L. W. HILL, President, St. Paul, Minn.
HOWARD JAMES, V.-P. and Gen. Mgr., Seattle, Wash.
C. C. LACEY, Marine Superintendent,
A. M. THOMAS, Auditor

S. J. ELLISON, Gen. Pas. Agt., St. Paul, Minn.
W. A. ROSS, Asst. Gen. Passenger Agent, Seattle, Wash.
W. C. THORN, Traveling Passenger Agent,
209 Adams St., Chicago, Ill.

TRAFFIC REPRESENTATIVES.

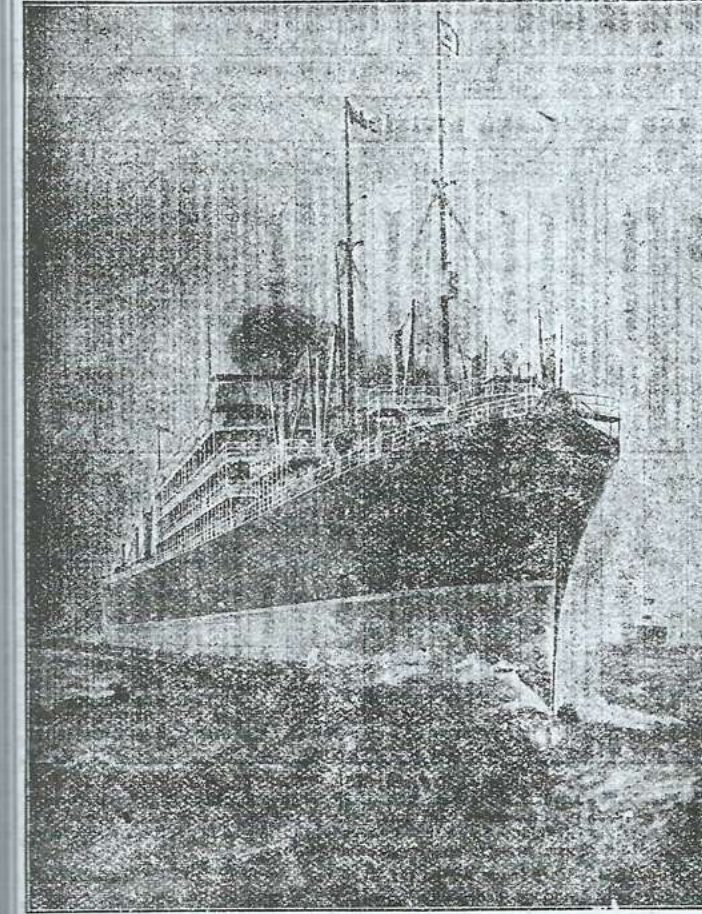
W. M. LOWRIE, 379 Broadway, New York.
W. F. MERSHON, 319 Broadway, " "
W. A. SEWARD, 284 Washington Street, Boston, Mass.
C. E. FOSTER, 207 Old South Building, " "
A. C. HARVEY, 836 Chestnut Street, Philadelphia, Pa.
H. W. PUMMILL, 711 Chestnut Street, " "
H. S. JONES, 823 Main Street, Kansas City, Mo.
JNO. VALLERY, 701 17th Street, Denver, Colo.
R. F. NESLEN, 79 W. Second South Street, Salt Lake, Utah.
G. W. COLBY, 655 Market Street, San Francisco, Cal.
T. K. STALEYER, 895 Market Street, " "
GEO. BIGHMY, Jr., 299 Main Street, Buffalo, N.Y.
W. G. MASON, 215 Ellicott Square, " "

L. D. KITCHELL, 902 Park Building, Pittsburgh, Pa.
C. E. BRISON, 805 Park Building, " "
E. J. SMITH, 411 Traction Building, Cincinnati, Ohio.
GEO. T. FOYES, 40 East Fourth Street, " "
E. B. CLARK, 710 Majestic Building, Detroit, Mich.
W. H. WHITAKER, 423 Majestic Building, " "
R. K. PRETTY, 1101 Third National Bank Bldg, St. Louis, Mo.
D. B. GARDNER, 306 Missouri Trust Building, " "
W. J. DUTCH, Fourth and Robert Streets, St. Paul, Minn.
C. F. O'DONNELL, Fifth and Robert Streets, " "
V. D. JONES, Third and Nicollet Avenue, Minneapolis, Minn.
G. F. McNEILL, 19 Nicollet Block, " "

BURNS, PHILP & CO., Sydney, Australia.

THOS. COOK & SONS, Agents, New York City, N.Y.
RAYMOND & WHITCOMB, Agents, Boston, Mass.
C. F. McWILLIAMS, General Agent, 10 Bund, Yokohama, Japan.
H. G. McMICKEN, European Traffic Agent, 21 Cockspur St., S.W., London, England.

THE SHORTEST AND MOST COMFORTABLE ROUTE TO THE ORIENT



OPERATING THE TWIN-SCREW MAIL STEAMSHIP
"MINNESOTA"

BETWEEN
Seattle, Yokohama, Kobe, Nagasaki,
Manila, Shanghai and
Hongkong

With Direct Connections for
Straits Settlements, Java,
Australia, India and Europe

ACCOMMODATIONS
Passenger accommodations unequaled by any vessels in the Trans-Pacific trade.
All first cabin staterooms are outside rooms, located amidships. Unusually large and comfortable berths are provided. Electric reading lights in each stateroom as well as telephone. A most complete system of ventilation.
Other features are the music room, library, social hall, smoking room, children's play room and electric laundry.

Sailing from Seattle:
Steamship "Minnesota" March 22d.

Low Excursion Rates to Japan and China

Permitting passenger to remain in the Orient four months, or, if pressed for time and anxious to see as many points of interest as possible, may at no extra fare leave the steamer at Yokohama, spend a week in the "Land of Chrysanthemums" and overtake his ship at Kobe or Nagasaki by rail. Similar privilege is accorded eastbound passengers. This arrangement allows nearly two weeks' stay in Japan and trips may be made to Tokyo, Nikko, Kamakura, Nagoya, Kyoto, Osaka, Miyonoshita, and other points of special interest to tourists.

For Folder, Rates and Detail Information apply to any railroad or steamship agent, or to the agents of the Great Northern and Northern Pacific Railways or Great Northern Steamship Co.

IN ALL THE WORLD NO TRIP LIKE THIS! NORTHERN STEAMSHIP COMPANY

Operating the Two Magnificent Steel Constructed, Ocean Modeled, Superbly Appointed Steamships "NORTH WEST" and "NORTH LAND." Accommodate 500 passengers. Carry no freight. 386 feet in length. 5,000 tons. 8,000 horse power.
Service discontinued until June, 1910

HOWARD JAMES, President, Buffalo, N.Y.
F. C. CRUGER, Manager, " "
W. M. LOWRIE, General Passenger Agent, 379 Broadway, New York.

